



Waikane Valley Impact Area Project Overview and Timeline

*Waikane Valley Restoration Advisory Board Meeting
21 September 2011
Lance Higa, NAVFAC PACIFIC*



Topics



- **Comprehensive Environmental Response, Compensation and Liability Act (of 1980) (CERCLA) clean up process**
- **Waikane Valley Impact Area Time Line**

Draft

Feasibility Study Report Munitions Response Site

**Waikane Valley Impact Area
Kaneohe, Hawaii**

September 2011

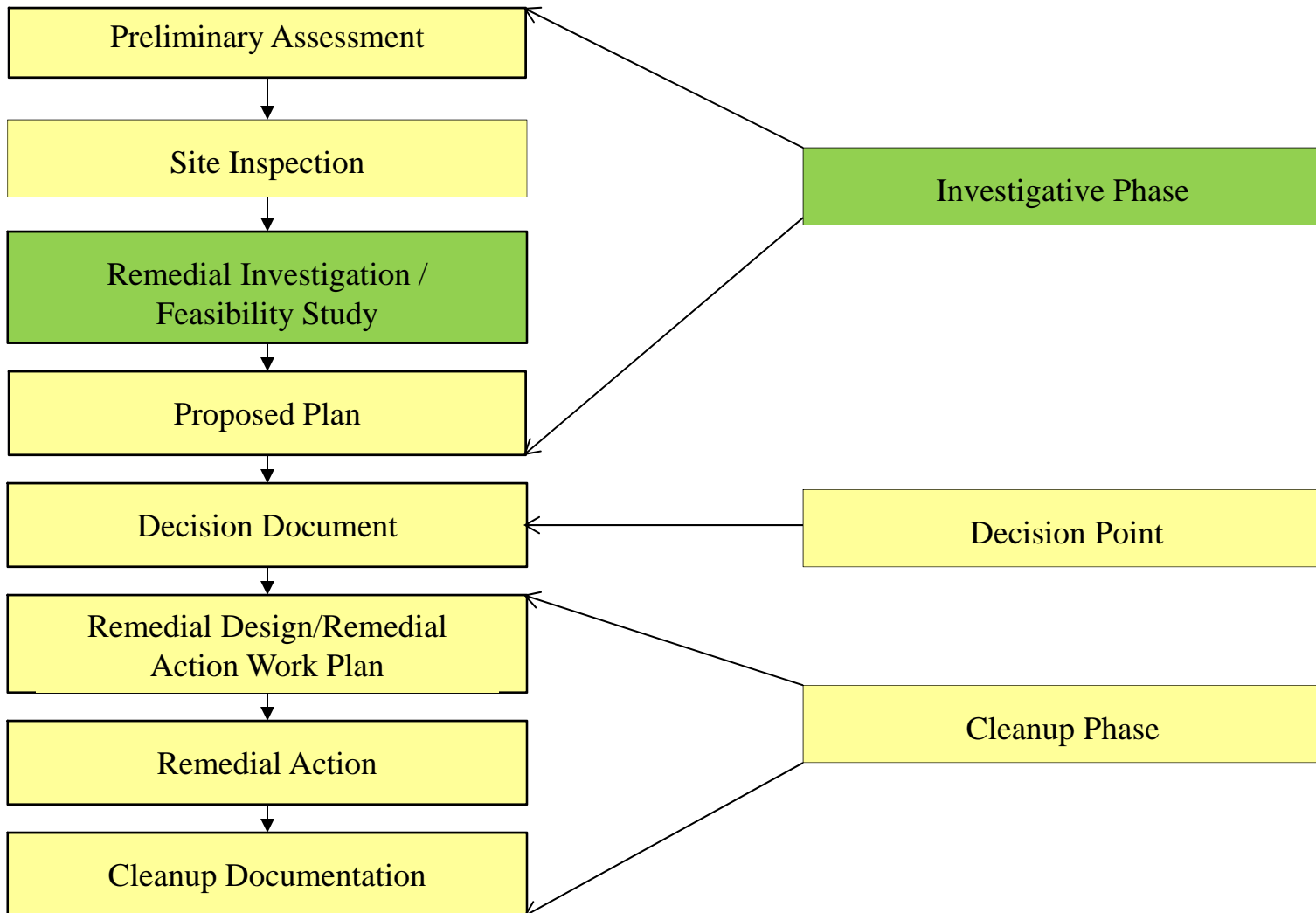
Commander
Naval Facilities Engineering Command, Pacific
258 Makalapa Drive, Suite 100
Pearl Harbor, HI 96860-3134



Contract Number N62742-05-D-1868, CTO 0010



Waikane Valley Impact Area Overview





CERCLA Process: Investigation



- **Preliminary Assessment (2001)**
 - Historical documents review and initial hazard determination
- **Added to Munitions Response Program (2005)**
- **RAB Established (2007)**
- **Site Inspection (2008)**
 - Initial sampling and data collection



Confirmed munitions on site and recommended a Remedial Investigation



CERCLA Process: Investigation



- **Remedial Investigation (2010)**
 - **Emphasis on data collection to characterize potential hazards on site, i.e. What? Where? And How Much?**

Munitions hazards present

Munitions constituents not harmful to human health and the environment





CERCLA Process: Investigation



- **Feasibility Study Objectives**
 - **Develop and evaluate potential remedial alternatives that permanently and significantly reduce the threat to public health, welfare and the environment**
 - **Select a cost-effective remedial action alternative that mitigates the threat(s)**
 - **Achieve consensus among Navy, State and Local authorities regarding the selected response action**



CERCLA Process: Investigation



- **Proposed Plan**
 - Selects a preferred response action from alternatives presented in the Feasibility Study
 - Official public meeting, 30 day public review and comment period
- **Decision Document**
 - Official summary of the selection process and selected remedy
 - Address comments received on the Proposed Plan



CERCLA Process: Cleanup



- **Remedial Design:**
 - Converts the Selected Remedy presented in the Decision Document into a full-scale design
 - Includes a Remedial Action Work Plan that details how land use controls will be applied
- **Remedial Action:**
 - Execution of the Remedial Design





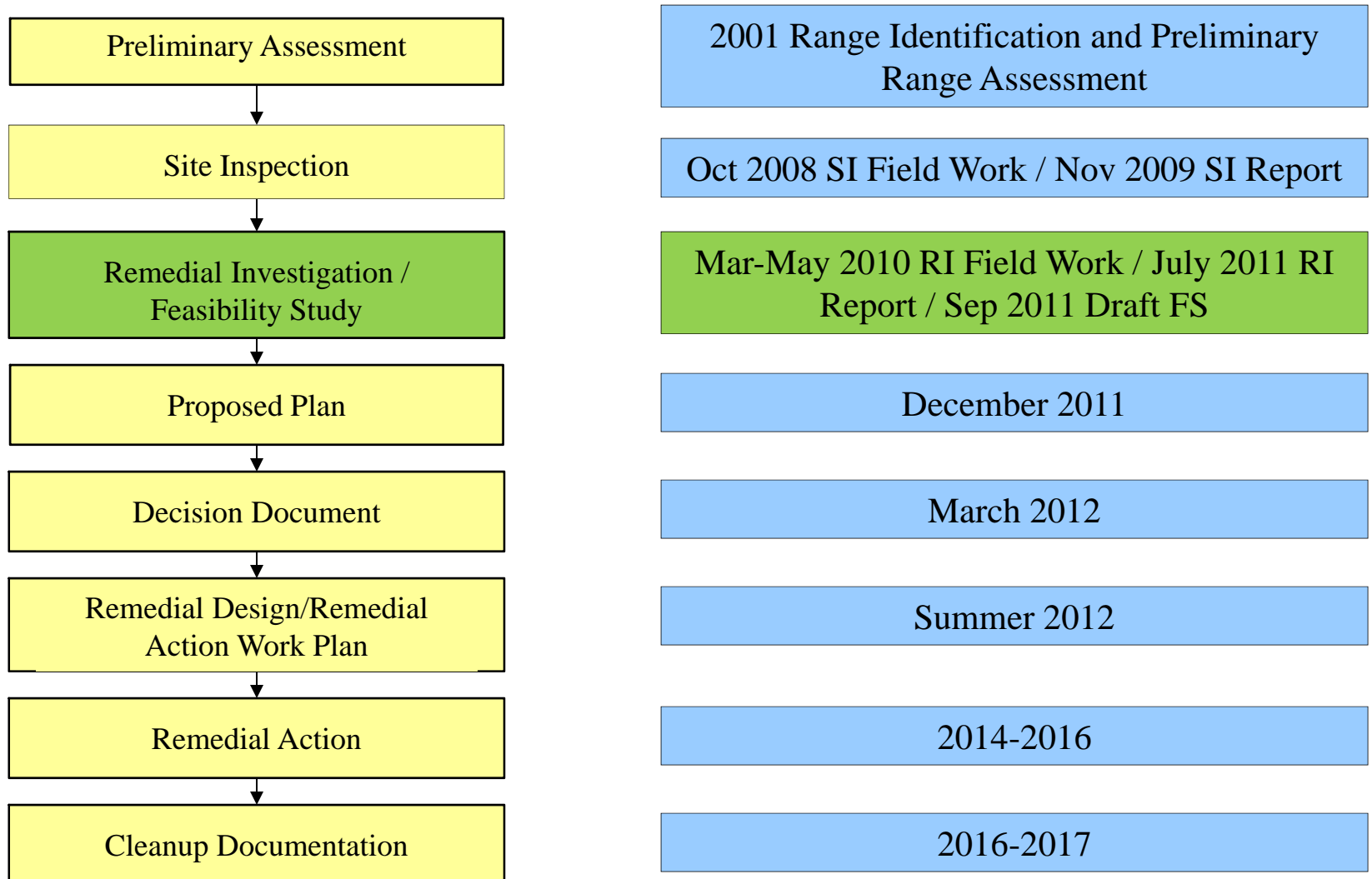
Cleanup Documentation



- **Cleanup Documentation**
 - Completion reports
 - Long term monitoring
- **Department of Defense Explosive Safety Board.**
 - Reviews all munitions response cleanup actions
 - Ensures sites are safe for intended land use



Waikane Valley Impact Area Timeline





Project Schedule



- **Draft FS Report (September 2011)**
 - **Comments due October 21 2011**
- **Final FS Report (November 2011)**
- **Proposed Plan (December 2011)**
 - **RAB/Public Meeting (Tentative) (December 14 2011)**
 - **Comments due January 2012**
- **Draft Decision Document (January 2012)**
 - **Comments due February 2012**
- **Final Decision Document (March 2012)**







Information Repositories



- **University of Hawaii at Manoa
Hamilton Library, Hawaiian &
Pacific Collection**
2550 McCarthy Mall
Honolulu, HI 96822
Ms. Jean Kusano (ph. 956.8227)
- **Kaneohe Public Library**
45-829 Kamehameha Hwy.
Kaneohe, HI 96744
Ms. Cynthia Chow (ph. 233.5674)
- **KEY Project**
45-200 Waihee Road
Kaneohe, HI 96744
**Ms. Lanette Mahelona
(ph. 239.5777)**

**Lifelong Learning**

Marine Corps Base Hawaii
Supporting Readiness and Global Projection

Installations, Environment & Logistics Directorate (IE&L)
Environmental Compliance and Protection Department

Waikane Valley RAB

[Work Plans and Reports](#)

[RAB Charter](#)

[Meetings](#)

[Fact Sheets](#)

[Back to the Environmental Home Page](#)

[Back to the IE&L Home Page](#)

[MCBH Webmaster](#)

[Top](#)



Thank You

